



15th Annual ROCKY MOUNTAIN HOSPITAL MEDICINE SYMPOSIUM

Practical Advances in the Care of the Hospitalized Patient

FEATURED SPEAKERS



ADRIENNE BOISSY, MD, MA
Chief Experience Officer
Cleveland Clinic Health System
Staff Neurologist
Assistant Clinical Director
Center for Neuroethics



PATRICK CONWAY, MD, MSC
Chief Medical Officer
Deputy Administrator for
Innovation & Quality
Center for Medicare &
Medicaid Services



DAVID MARK
Chief Executive Officer
Outcome Engenuity



BRADLEY SHARPE, MD
Professor of Clinical Medicine
University of California
San Francisco
School of Medicine

LEADER'S LUNCH SPEAKERS



RON GREENO, MD, MHM
President
Society of Hospital Medicine
Senior Advisor for
Medical Affairs
TeamHealth



LISA RIGGS, MSN, APRN-BC
President-Elect
American Association of
Critical-Care Nurses
Director, Regulatory Readiness
St Luke's Health System



MICHELLE MCCARTHY, PHARM D
Coordinator, Pharmacy Education,
Training, & Development
Director,
Pharmacy Residency Program
University of Virginia Health System

PRE-PROGRAM
NOV 5, 2017

ABIM Maintenance of Certification Courses

- 2017-2018 Update in Geriatric Medicine
- 2017-2018 Update in Internal Medicine
- 2017-2018 Update in Critical Care Medicine
- 2017-2018 Update in Hospital Medicine
- Hospital QI & Patient Safety MKM IV

NOV 6-7, 2017

RENAISSANCE DENVER STAPLETON HOTEL

Accredited by ACCME, ACPE, ANCC

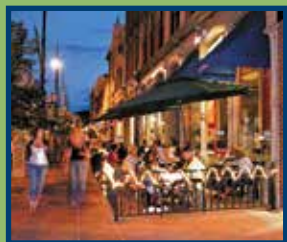
Jointly Provided by



SETTING **Renaissance Denver Stapleton Hotel** 3801 Quebec Street • Denver, CO 80207



This award-winning Denver hotel is centrally located off I-70, 10 minutes from Downtown and 20 minutes from the Denver International Airport. It offers 400 well-appointed hotel rooms with your choice of either a king or two queen sized beds, and in-room amenities such as high speed internet, goose down pillows and comforters, and premium cable channels. For extra convenience, the Renaissance Denver Stapleton Hotel offers a complimentary shuttle to and from the Denver Airport. The hotel has facilities such as heated indoor and outdoor pools, hot tub, dry sauna, and a fully equipped fitness center.



AREA ATTRACTIONS & LANDMARKS

Cherry Creek Mall, Larimer Square, Denver Pavilions, 16th Street Mall, Coors Field, Sports Authority Field at Mile High, Pepsi Center, Denver Zoo, Museum of Nature & Science, Denver Center for Performing Arts, Elitch Gardens Amusement Park, Children's Museum of Denver, Denver Art Museum, Denver Botanic Gardens, Downtown Aquarium, United States Mint

SLEEPING ROOMS

A block of rooms has been reserved at the Renaissance Denver Stapleton Hotel, 3801 Quebec Street, Denver, CO 80207. The RMHMS rate is **\$139** per night effective for reservations made by October 13th and is available on a first come first served basis. Call **303-399-7500** to make your reservation and be sure to reference the 'Rocky Mountain Hospital Medicine Symposium'.

TRANSPORTATION

17 miles from Denver International Airport. Airport shuttle service is available on request.



Photo courtesy VISIT DENVER

TARGET AUDIENCE

This program is designed to benefit Physicians, Nurses, Nurse Practitioners, Physician Assistants & Clinical Pharmacists.

There are no prerequisites required for this course. To claim your certificate you must attend the seminar, complete the activity evaluation and download your certificate of completion.

COURSE DESCRIPTION

Program sessions integrate the most current scientific and clinical information and incorporate case-based learning methods. A discussion period after each presentation will be used to clarify and debate issues. Participants will also have the opportunity to visit exhibits.

LEARNING OBJECTIVES

These objectives support medical assessment and management with patient populations for physicians, nurses, nurse practitioners, physician assistants and pharmacists.

- Formulate and integrate an evidence-based approach to key clinical challenges in hospital medicine.
- Describe diagnostic and management skills relevant to improving the care of the hospitalized patient.
- Implement optimal team-based strategies to promote systems changes and quality improvement.
- Promote successful transitions of care to the outpatient care arena.

Competencies addressed: Patient Care & Procedural Skills; Medical Knowledge; Interpersonal & Communication Skills; Professionalism; System-Based Practice

The information provided at this CME/CE activity is for continuing education purposes only and is not meant to substitute for the independent medical/clinical judgment of a healthcare provider relative to diagnostic and treatment options of a specific patient's medical condition. If you have activity questions or concerns, please contact cpdsupport@health.usf.edu or call 813-224-7860.

USF is an Equal Opportunity/Affirmative Action/Equal Access Institution. For disability accommodations contact CEConsultants at 303-933-1767 within 5 days of the event.



PRE-PROGRAM

Sunday, November 5, 2017

Renaissance Denver Hotel

ABIM MAINTENANCE OF CERTIFICATION (MOC) SESSIONS 7:00AM-6:25PM

OVERVIEW: Sessions cover 5 modules (Geriatric Medicine, Internal Medicine, Critical Care Medicine, Hospital Medicine and Hospital QI & Patient Safety) and offer up to 48 points (10 per module except 8 for the Hospital QI module) toward MOC and 42 *AMA PRA Category 1 Credits*™ total. Choose individual courses or save \$175 when you register for the 4-Pack or \$255 when you register for the 5-Pack!

FACULTY:

Jonathan Pell, MD: Assistant Professor of Medicine, Hospital Medicine Section, University of Colorado Hospital, University of Colorado

Read Pierce, MD: Assistant Professor of Medicine, Hospital Medicine Section, University of Colorado Hospital, University of Colorado

Eric Schmidt, MD: Assistant Professor of Medicine, Division of Pulmonary Sciences & Critical Care Medicine, University of Colorado

Jeffrey Wallace, MD, MPH: Professor of Medicine, Director of Clinical Geriatrics, University of Colorado

Brian Wolfe, MD: Assistant Professor of Medicine, Hospital Medicine Section, University of Colorado Hospital, University of Colorado

ABIM Maintenance of Certification (MOC) AGENDA

| | | | | |
|-----------------|--|--------|--|-------------------|
| 6:45am-7:00am | Registration | | MOC 4-Pack: \$825 (choose any 4 sessions) | MOC 5-Pack: \$995 |
| 7:00am-9:05am | 2017-2018 Update in Geriatric Medicine | \$250* | | |
| 9:05am-9:15am | Break | | | |
| 9:15am-11:20am | 2017-2018 Update in Internal Medicine | \$250* | | |
| 11:20am-11:50am | Lunch Provided | | | |
| 11:50am-1:55pm | 2017-2018 Update in Critical Care Medicine | \$250* | | |
| 1:55pm-2:05pm | Break | | | |
| 2:05pm-4:10pm | 2017-2018 Update in Hospital Medicine | \$250* | | |
| 4:10pm-4:20pm | Break | | | |
| 4:20pm-6:25pm | Hospital QI & Patient Safety MKM IV | \$250* | | |

COST: \$250/module, \$825 for 4 modules (MOC 4-Pack) or \$995 for all 5 (MOC 5-Pack).

Registration deadline is 10/14/16. Choose individual courses or *save \$175 when you register for the 4-Pack or \$255 when you register for the 5-Pack!*

MOC: 48 points (10/module except 8 for the Hospital QI & Patient Safety) toward the Maintenance of Certification program.

CME: 42 *AMA PRA Category 1 Credits*™ for enduring materials (if all 5 modules completed). CME credits provided by the American Board of Internal Medicine.

**RMHMS attendance IS NOT required to register for these activities. Pre-Program fees are additional.*

Full program details and schedules are available on the following website under 'ABIM MOC':

www.thececonsultants.com

PROGRAM AGENDA

Flexible Track Format: Choose to attend any session in any track at any given hour. Allows you to develop your own course to fit your individual needs.

“The variety of subject matter, multiple tracks and dynamic speakers make this hospital conference the best!”

- Past participant

| DAY 1 Monday, November 6, 2017 | | | |
|--------------------------------------|--|--|---|
| 7:00-8:00 | Registration (breakfast on your own) | | |
| 8:00-8:15 | Clinical Overview: Hospital Medicine 2017 <i>Jeffrey Glasheen, MD</i> | | |
| 8:15-9:05 | Transforming the People Experience <i>Adrienne Boissy, MD, MA</i> | | |
| 9:05-9:55 | The Role of Innovation in Medicine <i>Richard Zane, MD</i> | | |
| 9:55-10:10 | BREAK/EXHIBITS | | |
| 10:10-11:00 | Update in Hospital Medicine 2017 <i>Melver Anderson, MD</i> | | |
| 11:00-11:30 | BREAK/EXHIBITS | | |
| LEADER'S LUNCH 11:30-12:20 | Under the MACRAscope: A Hospitalist Perspective <i>RON GREENO, MD</i> President, Society of Hospital Medicine, Senior Advisor for Medical Affairs, TeamHealth | Keeping our Promise to Patients: Guided by Why <i>LISA RIGGS, MSN, APRN-BC</i> President-Elect, American Association of Critical-Care Nurses, Director, Regulatory Readiness, St Luke's Health System | Leveraging & Developing Your Team For Optimal Outcomes <i>MICHELLE MCCARTHY, PHARM D</i> Coordinator, Pharmacy Education, Training & Development, Director, Pharmacy Residency Program, University of Virginia Health System |
| 12:20-12:30 | BREAK/EXHIBITS | | |

| DAY 2 Tuesday, November 7, 2017 | |
|---------------------------------|--|
| 7:25-8:00 | Registration (breakfast on your own) |
| 8:00-8:05 | Opening Remarks <i>Jeffrey Glasheen, MD</i> |
| 8:05-9:00 | 3 Dice: The Path to Highly Reliable Outcomes <i>David Marx</i> |
| 9:00-9:55 | Updates in Community-Acquired Pneumonia <i>Bradley Sharpe, MD</i> |
| 9:55-10:10 | BREAK/EXHIBITS |
| 10:10-11:05 | Evidence-Based Medicine 2017: Things To Do Differently Tomorrow <i>Emily Gottenborg, MD</i> |
| 11:05-11:30 | BREAK/EXHIBITS |
| 11:30-12:20 | SEMINAR LUNCH Healthcare Transformation & Innovation <i>Patrick Conway, MD, MSc</i> |
| 12:20-12:30 | BREAK/EXHIBITS |

| TRACKS ▶ | HOSPITAL MEDICINE | CRITICAL CARE SUMMIT | DILEMMAS IN HOSPITAL MEDICINE |
|------------|--|---|---|
| 12:30-1:25 | Hitchhiker's Guide to Colorado Medicine: What You (May Not Even Know You) Need to Know to Practice Medicine in CO <i>Lessing, Diaz, McFarland</i> | Approach to Acute Lung Injury & ARDS <i>Anna Neumeier, MD</i> | Dilemmas in Communication <i>Patrick Kneeland, MD</i> |
| 1:25-1:40 | BREAK/EXHIBITS | | |
| 1:40-2:35 | Approach to Hyponatremia <i>Jessica Kendrick, MD</i> | Management of Sepsis <i>Nathaniel Little, MD</i> | Dilemmas in Acute Pulmonary Embolism <i>Peter Sottile, MD</i> |
| 2:35-2:50 | BREAK/EXHIBITS | | |
| 2:50-3:45 | Management of Acute Coronary Syndromes <i>TBD</i> | Management of the Severe CHF Exacerbation <i>Larry Allen, MD</i> | CURBSIDE CONFIDENTIAL |
| | | | Answering the Most Common Stroke & TIA Questions <i>Sharon Poisson, MD</i> |
| 3:45-3:55 | BREAK/EXHIBITS | | |
| 3:55-4:50 | Optimizing Antibiotic Treatment of Skin & Soft Tissue Infections <i>Timothy Jenkins, MD</i> | Hypertensive Urgency & Emergency <i>Abigail Lara, MD</i> | Answering the Most Common Geriatric Medicine Questions <i>Jeffrey Wallace, MD, MPH</i> |
| 4:50-6:30 | Reception & Abstract Presentation | | |

| TRACKS ▶ | HOSPITAL MEDICINE | PERIOPERATIVE SUMMIT | DILEMMAS IN HOSPITAL MEDICINE |
|------------|---|---|---|
| 12:30-1:25 | Highly Reliable Outcomes: Clinical Examples <i>David Marx</i> | Approach to Cardiovascular Perioperative Evaluation <i>Christopher King, MD</i> | Dilemmas in Hospital Anticoagulation <i>Kathryn Hassell, MD</i> |
| 1:25-1:40 | BREAK/EXHIBITS | | |
| 1:40-2:35 | Medical Aid in Dying: Experience with Implementing the Colorado End-of-Life Options Act <i>Jean Kutner, MD, MPH/MSPH</i> | Perioperative Potpourri: Choose Your Own Topics <i>Brian Wolfe, MD</i> | Dilemmas in Palliative Care <i>Jeanie Youngwerth, MD</i> |
| 2:35-2:50 | BREAK/EXHIBITS | | |
| 2:50-3:45 | Black Clouds, Beauty Sleep & Bowls of Candy: Myths, Truths & Half-Truths in Medicine <i>Bradley Sharpe, MD</i> | Pulmonary Perioperative Evaluation <i>David Ecker, MD</i> | CURBSIDE CONFIDENTIAL |
| | | | Answering the Most Common Infection Control Questions <i>Michelle Barron, MD</i> |
| 3:45-3:55 | BREAK/EXHIBITS | | |
| 3:55-4:50 | Recreational Marijuana 3 Years Later <i>Kennon Heard, MD</i> | Controversies in Perioperative Antithrombotic Therapy <i>Mary Anderson Wallace, MD</i> | Answering the Most Common Renal Questions <i>John Carson, MD</i> |
| 4:50 | Adjourn | | |

COURSE DIRECTOR

JEFFREY GLASHEEN, MD, SFHM
Chief Quality Officer, UCHealth
Professor of Medicine
Associate Dean for Clinical Affairs
Director, Institute for Healthcare Quality,
Safety & Efficiency
University of Colorado

VISITING FACULTY

ADRIENNE BOISSY, MD, MA
Chief Experience Officer
Cleveland Clinic Health System
Staff Neurologist
Cleveland Clinic Mellon Center for
Multiple Sclerosis
Assistant Clinical Director
Center for Neuroethics
Cleveland, OH

PATRICK CONWAY, MD, MSC
Chief Medical Officer
Deputy Administrator for Innovation & Quality
Center for Medicare & Medicaid Services
Baltimore, MD

RON GREENO, MD
President, Society of Hospital Medicine
Senior Advisor for Medical Affairs
TeamHealth
Los Angeles, CA

DAVID MARX
Chief Executive Officer
Outcome Engenuity
Eden Prairie, MN

MICHELLE MCCARTHY, PHARM.D., FASHP
Coordinator, Pharmacy Education Training &
Development Services
Director, Pharmacy Residency Program
Department of Pharmacy Services
University of Virginia Health System
Charlottesville, VA

LISA RIGGS, MSN, APRN-BC, CCRN-K
President-Elect
American Association of Critical-Care Nurses
Director, Regulatory Readiness
St Luke's Health System
Kansas City, MO

BRADLEY SHARPE, MD
Professor of Clinical Medicine
Department of Medicine
University of California San Francisco
School of Medicine
San Francisco, CA

FACULTY DISCLOSURE: *USF Health adheres to the ACCME Standards regarding commercial support of continuing medical education. It is the policy of USF Health that the faculty and planning committee disclose real or apparent conflicts of interest relating to the topics of this educational activity, that relevant conflict(s) of interest are resolved and also that speakers will disclose any unlabeled/unapproved use of drug(s) or device(s) during their presentation. Detailed disclosure will be made in the course syllabus.*

ACCREDITATION



ACCME: This activity has been planned and implemented in accordance with the accreditation requirements and policies of the Accreditation Council for Continuing Medical Education (ACCME) through the joint providership of USF Health and CEConsultants. USF Health is accredited by the ACCME to provide continuing medical education for physicians.

USF Health designates this live activity for a maximum of 14.50 *AMA PRA Category 1 Credits™*. Physicians should claim only the credit commensurate with the extent of their participation in the activity.

ANCC: USF Health is accredited as a provider of continuing nursing education by the American Nurses Credentialing Center's Commission on Accreditation.

A maximum of 14.50 contact hours may be earned by learners who successfully complete this continuing nursing education activity.

AAPA: AAPA accepts certificates of participation for educational activities certified for *AMA PRA Category 1 Credit™* from ACCME accredited providers. Physician Assistants who participate will receive a certificate of completion commensurate with the extent of their participation.

LARRY ALLEN, MD
Associate Professor of Medicine
Division of Cardiology
University of Colorado

MELVER ANDERSON, MD
Associate Professor of Medicine
Head, Hospital Medicine Service
Denver VA Medical Center
University of Colorado

MICHELLE BARRON, MD
Associate Professor of Medicine
Division of Infectious Diseases
University of Colorado

JOHN CARSON, MD
Assistant Professor of Medicine
Division of Renal Diseases
& Hypertension
University of Colorado

MANUEL DIAZ, MD
Assistant Professor of Medicine
Hospital Medicine Section
University of Colorado Hospital
University of Colorado

DAVID ECKER, MD
Assistant Professor of Medicine
Hospital Medicine Section
University of Colorado Hospital
University of Colorado

EMILY GOTTENBORG, MD
Assistant Professor of Medicine
Hospital Medicine Group
University of Colorado

KATHRYN HASSELL, MD
Professor of Medicine
Division of Hematology
University of Colorado

KENNON HEARD, MD
Associate Professor of
Emergency Medicine
Chief, Section of Medical Toxicology
& Pharmacology
University of Colorado

TIMOTHY JENKINS, MD
Associate Professor of Medicine
Division of Infectious Diseases
University of Colorado

JESSICA KENDRICK, MD
Associate Professor of Medicine
Division of Renal Diseases
& Hypertension
University of Colorado

CHRISTOPHER KING, MD
Assistant Professor of Medicine
Hospital Medicine Section
University of Colorado Hospital
University of Colorado

PATRICK KNEELAND, MD
Assistant Professor of Medicine
Hospital Medicine Section
Medical Director, Patient &
Provider Experience
University of Colorado Hospital
University of Colorado

JEAN KUTNER, MD, MPH/MSPH
Professor of Medicine
Chief Medical Officer
University of Colorado Hospital
Associate Dean for Clinical Affairs
University of Colorado

ABIGAIL LARA, MD
Associate Professor of Medicine
Division of Pulmonary Sciences
& Critical Care Medicine
University of Colorado

NATHANIEL LITTLE, MD
Assistant Professor of Medicine
Division of Pulmonary Sciences
& Critical Care Medicine
University of Colorado

JUAN LESSING, MD
Instructor of Medicine
Hospital Medicine Section
University of Colorado Hospital
University of Colorado

CRAIG MCFARLAND, MD
Instructor of Medicine
Hospital Medicine Section
University of Colorado Hospital
University of Colorado

ANNA NEUMEIER, MD
Assistant Professor of Medicine
Division of Pulmonary Sciences
& Critical Care Medicine
University of Colorado

SHARON POISSON, MD
Assistant Professor of Neurology
University of Colorado

PETER SOTTILE, MD
Assistant Professor of Medicine
Division of Pulmonary Sciences
& Critical Care Medicine
University of Colorado

JEFFREY WALLACE, MD, MPH
Professor of Medicine
Director of Clinical Geriatrics
University of Colorado

MARY ANDERSON WALLACE, MD
Assistant Professor of Medicine
Director, Medical Consult Service
Hospital Medicine Section
University of Colorado Hospital
University of Colorado

BRIAN WOLFE, MD
Assistant Professor of Medicine
Hospital Medicine Section
University of Colorado Hospital
University of Colorado

JEANIE YOUNGWERTH, MD
Associate Professor of Medicine
Hospital Medicine Section
Director, Palliative Care Consult Service
University of Colorado Hospital
University of Colorado

RICHARD ZANE, MD
Professor & Boedecker Foundation
Chair of Emergency Medicine
Chief Innovation Officer
UCHealth, University of Colorado



ACPE: USF Health is accredited by the Accreditation Council for Pharmacy Education as a provider of continuing pharmacy education. This knowledge-based program has been approved for 14.5 contact hours (1.45 CEUs). Universal program number for the full program is as follows: **0230-9999-17-024-L01-P**. Day 1 of this knowledge-based program has been approved for 7.25 contact hours (0.725 CEUs). Universal program number for Day 1 is as follows: **0230-9999-17-025-L01-P**. Day 2 of this knowledge-based program has been approved for 7.25 contact hours (0.725 CEUs). Universal program number for Day 2 is as follows: **0230-9999-17-026-L01-P**.

To receive continuing education credit, a pharmacist must attend the accredited sessions, actively participate in questions and answers, and must return the program evaluation instrument. In order to receive full credit, registrants must register no later than 10 minutes after the start of the meeting and must attend the entire meeting.

It is the responsibility of the pharmacy participant to ensure the provider has the learner's birthday and ePID NABP number; it is the responsibility of the provider to submit to CPE Monitor participant information within 60 days of the activity for all participants who have attended, attested to their participation and provided their ePID/NABP number and birthday.

Two Ways to Reserve Your Place

- ▶ **Register Online.** Visit www.cme.hsc.usf.edu and click on Course Calendar. Search November 2017 for the Rocky Mountain Hospital Medicine Symposium.
- ▶ **Detach & Return Form BELOW**

| Optional Pre-Program Activities Sunday, November 05, 2017 | | |
|--|--|-----------|
| ABIM MAINTENANCE OF CERTIFICATION (MOC) Register by 11/03/17 | 2017-2018 Update in Geriatric Medicine | \$250 |
| | 2017-2018 Update in Internal Medicine | \$250 |
| | 2017-2018 Update in Critical Care Medicine | \$250 |
| | 2017-2018 Update in Hospital Medicine | \$250 |
| | Hospital QI & Patient Safety MKM IV | \$250 |
| Attend 4 or 5 MOC courses to receive a discount. ▶ | MOC 4-Pack for any 4 modules | \$825 |
| | MOC 5-Pack for all 5 modules | \$995 |
| Pre-Program TOTAL | | \$ |

| Rocky Mountain Hospital Medicine Symposium Monday & Tuesday, November 6-7 | | |
|---|------------------------------------|---|
| Please check a box. If single day option choose which day. | Full Conference 11/06 AND 11/07 | Single Day 11/06 OR 11/07 |
| EARLY RATE (Before 9/29/17) | \$339 | \$229 <input type="checkbox"/> Mon 11/06 <input type="checkbox"/> Tues 11/07 |
| STANDARD RATE (After 9/29/17) | \$369 | \$249 <input type="checkbox"/> Mon 11/06 <input type="checkbox"/> Tues 11/07 |
| WALK-IN RATE (Day of event) | \$399 | \$279 <input type="checkbox"/> Mon 11/06 <input type="checkbox"/> Tues 11/07 |
| RMHMS TOTAL | | \$ |

| | |
|---|-----------|
| TOTAL AMOUNT DUE (Pre-Program + RMHMS) | \$ |
|---|-----------|

| Pharmacy Participants Only | | |
|--|---|------------------|
| Name (As you would like listed on your CME/CE certificate) | NABP# | Birthday (MM/DD) |
| | | |
| Degree (MD, NP, PA, RPh etc.) | Specialty (Hospitalist, Internist, Family Practitioner, etc.) | |
| | | |
| Address | | |
| | | |
| City, State, Zip | Phone | |
| | | |
| Email (For sending receipt and claiming CME/CE) | | |

PAY BY CREDIT CARD: Visa MC Discover AmEx

| | | |
|--|-----------------|---------------------------------------|
| Name on card | \$ | Amount |
| | | |
| Credit Card Number | Expiration Date | CVV (3 or 4 digit card security code) |
| | | |
| Billing Zip Code (if different from above) | Signature | |

PAY BY CHECK: Return form and enclose check payable to **CEConsultants, LLC**.
Mail to: **CEConsultants, LLC**, 33 Lark Bunting Lane, Littleton, CO 80127 OR Fax: 303-933-1764

I have special needs and require accommodation in order to fully participate in this activity. (Someone will contact you to discuss your needs.)

REFUND POLICY: No refunds for Pre-Program Activities. Cancellations for the main program received by 9/29/17 will be refunded less a \$75 administrative fee. **NO REFUNDS** after 9/29/17.

For more information, questions, or complaints contact CEConsultants at questions@thececonsultants.com or call 303-933-1767.